





Front cover image:
Norman Akers
(United States,
born 1958)
The Gathering, 2012
Lithograph on
paper
22 3/4 x 16 1/2 in.
K-State, Beach
Museum of Art,
2013.7

DIRECTOR'S LETTER

A REFLECTION ON FISCAL YEAR 2013

It's been a wonderful year at the Marianna Kistler Beach Museum of Art — bringing to fruition projects on which the staff has long worked and gifts and opportunities provided we could not have foreseen a year ago. Your museum has been a busy place on many fronts.

In late June the museum's collections became accessible online, thanks to generous support from the Weary Family Foundation and the hard work of several staff members, especially Registrar and Collections Manager Sarah Price. This huge step in making our collections available to the public online involved large behind-the-scenes changes within the museum. More than 7,000 works of art had to be digitally photographed, usually in multiple views and with details. All data and images had to be transferred to a new collection management system capable of interfacing with the website. Congratulations to everyone who contributed to this effort.

This year a number of positions have been changed or added to the museum staff. While most of these derived from the reallocation of funds and responsibilities, some of the additions were made possible by generous gifts of support. With less funding from the state for university salaries, gifts that allow the museum to hire and retain top-quality staff are a significant need. I am deeply grateful to the Weary Family Foundation and to members of the museum's Board of Visitors for stepping in to assist by making some short-term positions possible. The challenge remains to sustain these levels of staffing long term.

I want to mention two of the many important funds established for the museum this past year. Longtime K-State Professor of Horticulture Max Miller, who died in September 2012, left a wonderful quasi-endowed gift for the purchase and conservation of works of art. Artist and faculty emerita member Margo Kren established the George and Margo Kren Fund in support of professional development for Beach Museum staff members. Gifts such as these have already made the Beach Museum a stronger organization, more prepared to carry out its mission. My sincerest thanks to each one of you who has contributed to our work.



Linda Duke
Director

MARIANNA KISTLER BEACH MUSEUM OF ART BOARDS

ADVISORY BOARD

The Advisory Board advises the director of the Beach Museum of Art on all matters, from governance to programming. The board currently has 15 members appointed by the president of Kansas State University.

Jackie Hartman-Borck, *chairman*
Richard Seaton, *vice chairman*
Kathy Borck, *secretary*
Deloris Berland
Fred Cholick
Gerry Craig
Tim de Noble
Lori Goetsch
Joyce Glasscock
LuAnn Hoover
Jon Levin
Virginia Moxley
Bob Shannon
Fran Willbrant
Linda Weis
Liz Workman
Linda Duke, *Ex officio*

BOARD OF VISITORS

The Board of Visitors is comprised of some of the museum's most significant and committed donors. It provides advice to the director of the Beach Museum of Art on a range of matters pertaining to the museum. The board is empowered to raise discretionary funds on behalf of the museum.

ACTIVE MEMBERS

Dan and Beth Bird
Dale and Susanne Bradley
Bob and Dale Ann Clore
Nelson and Marilyn Galle
Joann Goldstein
John and Mary Lee Graham
Russell Clay Harvey and Patricia McGivern
Cleve Humbert
Fred and Virginia Merrill
Mike and Dee Michaelis
Catherine Parr
Warren and Carol Weibert

HONORARY MEMBERS

Carrie Kistler Edwards
Jerry and Robba Moran
Crosby and Bebe Kemper
Edward and Karen Seaton
Jon and Ruth Ann Wefald

FRIENDS OF THE BEACH MUSEUM OF ART

The Friends of the Beach Museum of Art raises funds through membership fees and other projects for the acquisition of art for the permanent collection and to support conservation of the collection.

Janet Cooper, *president*
Sharon Kriss, *president-elect*
Sarah Hancock, *vice president*
Tom Giller, *treasurer*
Kay Weigel, *secretary*
Jo Lyle, *past president*
Susan Adamchak
Susanne Bradley
Lincoln Deihl
Nancy Farrar
Janice Flanary
Peg Hornsby
Steve Levin
Jill Myers
Suzanne Otto
Dixie Roberts
Whitney Short
Noel Schulz
Edward Thompson
Ken Warren
Liz Workman

EX OFFICIO

Linda Duke
Gerry Craig

EMERITUS

Marianna Beach
Perry and Virginia Peine
Mary H. Pollack (*Lawrence*)
Bill Stolzer
Barbara Wilson

EX OFFICIO

Linda Duke
Fred Cholick
Jackie Hartman
Noel Schulz

FRIENDS OF THE BEACH MUSEUM OF ART ADVISORS

Deloris Berland
Kathy Borck
Ruth Browne
Carole Chelz
Mary Cottom
Jerome Dees
Joleen Hill
Cleve Humbert
Micky Jensen
Beth Kesinger
Pat Kershner
Linda Knupp
Bob Kruh
Bob and Diana McCaustland
Martha Miller
Jay Nelson
Sharon Reagan
Whitney Short
Sharon Snyder
Rae Stamey
Ruth Ann Wefald

COLLABORATIVE PROJECTS

Museum participation in collaborative public programs has grown in so many ways this year. These programs allow us to reach new audiences in meaningful ways. Here are three of special note.



AN ARTS ADVENTURE: The Beach Museum and McCain Auditorium joined forces to offer a unique trip to Northern California. Extraordinary visual and performing arts, fine food and special wines were selected to provide experiences unavailable to the general public. A generous donation from each trip participant was split between the two arts organizations. We hope this is the start of a new tradition!



SERVING MILITARY PERSONNEL AND FAMILIES: Healing Arts — a collaboration of the museum, the Institute for the Health and Security of Military Families, the Fort Riley Warrior Transition Battalion, and Fort Riley Parent to Parent group — has established a museum program serving Wounded Warriors and military families. Healing Arts opened the door to a unique partnership with K-State's McCain Auditorium. This coalition invited San Francisco-based artists from the Joe Goode Performance Group to a creative residency that culminated in a moving performance that conveyed the beauty and complexity of human resilience.



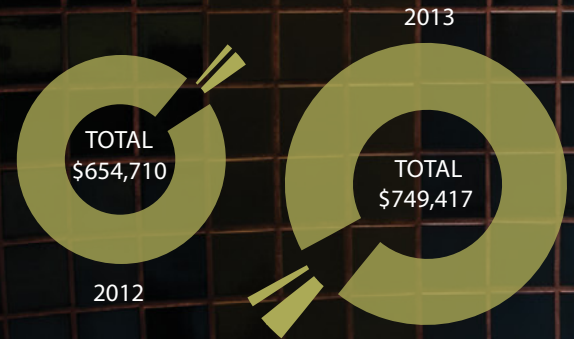
A PLACE-BASED INITIATIVE: A campus-community collaboration led to The Meadow, a garden of native Kansas plants taking shape just north of the museum. Thanks to a generous gift from the Hummel Family in memory of William C. and Sara T. Hummel, the museum is working with the Department of Landscape Architecture/Regional and Community Planning; Division of Biology; Department of Horticulture, Forestry and Recreation Resources; Department of Art, and other departments to create this site for research, education and enjoyment. KSU Division of Facilities, Grounds Maintenance, two Boy Scout troops and a small army of volunteers have worked together with faculty and students on the project. The Meadow celebrates this unique place: the Flint Hills. Visit the museum's blog at blogs.k-state.edu/meadow/ for more information.

FISCAL YEAR 2013

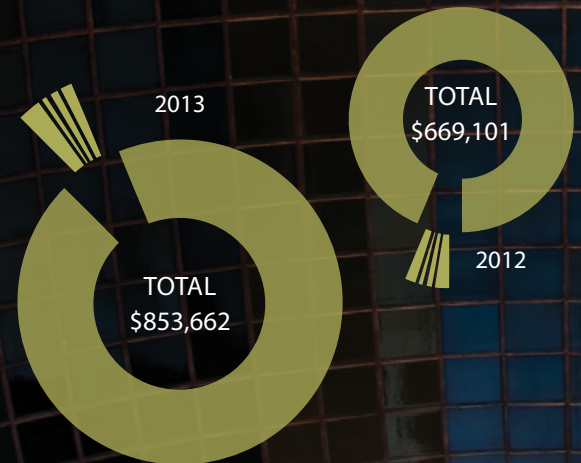
JULY 1, 2012 – JUNE 30, 2013

STATEMENT OF REVENUE AND EXPENDITURES

REVENUE	FY 2012	FY 2013
State Appropriation	\$642,148	\$690,284
Grants	\$4,642	\$49,509
Receipts	\$7,920	\$9,624
Total Revenue	\$654,710	\$749,417



EXPENDITURES	FY 2012	FY 2013
Salaries	\$644,183	\$788,427
Contractual Services	\$14,437	\$36,026
Travel	\$2,453	\$12,677
Supplies	\$7,693	\$12,632
Other Misc. Expenses	\$335	\$3,860
Total Expenses	\$669,101	\$853,622



GRANTS RECEIVED

BRAMLAGE FAMILY FOUNDATION: \$5,000

PROJECT PERIOD: February 1 – October 13, 2013

DESCRIPTION: This grant supports the Building the Brain Through Curiosity tour for the Museum of Wonder, an innovative K-6 tour that encourages creative and critical thinking about objects, art and collections. It supports research and program development, supplies and busing for USD 475 students, and evaluation.

TARGET CORP.: \$2,000

DESCRIPTION: This grant supported the purchase of equipment for the On Target Observation Station for outreach to area middle schools. The outreach program promotes STEAM learning by integrating art, language arts and science through observation activities.

VAN SWAAY FAMILY FOUNDATION: \$1,000

DESCRIPTION: Money to be used for busing for school tours.

WEARY FAMILY FOUNDATION: \$40,000

PROJECT PERIOD: January 2009 – December 2014

DESCRIPTION: This ongoing grant program has provided funding for the digitization of the museum's collection and the creation of a searchable database for its website. Expenses for this fiscal year included a full-time collection assistant to provide support in completing the digital image processing and database record management.

**HENRY LUCE FOUNDATION:
(TOTAL AWARD OF \$75,000)**

PROJECT PERIOD: December 2012 – November 2015

PROJECT TITLE: The Associated American Artists, 1934-2000

DESCRIPTION: This grant supports the development of an exhibition and accompanying publication that provides the first comprehensive and critical overview of the Associated American Artists, the commercial organization best known as the publisher of prints by Thomas Hart Benton, John Steuart Curry and Grant Wood.

SELECTED ACQUISITIONS

JULY 1, 2012 – JUNE 30, 2013

The Kansas State University art collection began in 1928 with the efforts of John F. Helm Jr. After 1996, many of these works entered the permanent collection of the Beach Museum of Art. The collection now totals some 7,500 works. The museum's collection has long emphasized the art of Kansas and the region (the first acquisition was an oil painting by Lindsborg artist Birger Sandzén), and it continues to do so. As in past years, collection growth is the result of the generous help of donors and the Friends of the Beach Museum of Art.

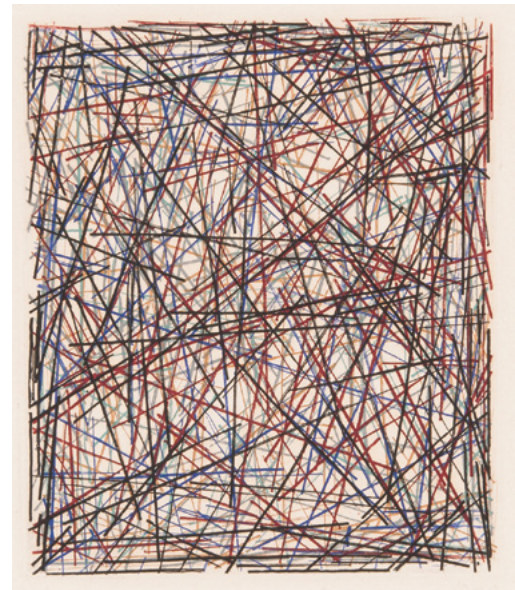
TOTAL FISCAL YEAR 2013

ACQUISITIONS: 1,567.

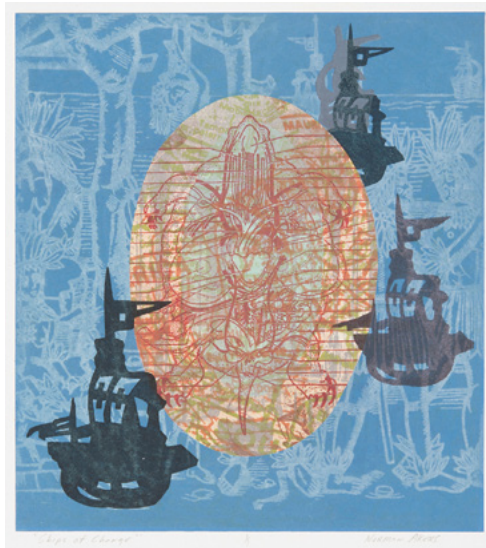
Representative examples follow.



1. *Blue Napkins and Spoons*, 1987



4. *Untitled*, 1979



2. *Ships of Change*, 2008

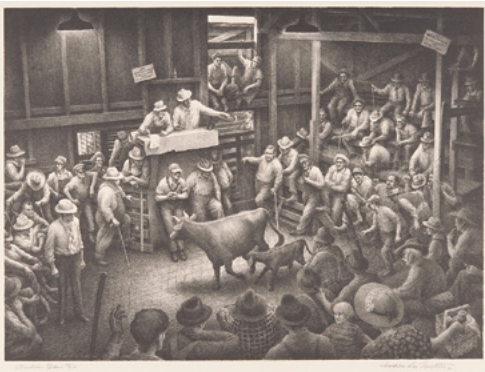
5. *Carved Redware Jar*, 1977



3. *Theatres of War*, 2006



6. *Southeast of Santa Fe, NM*, 1950



7. Auction Barn, 1989



8. Polychrome Shoulder Jar, early 20th century

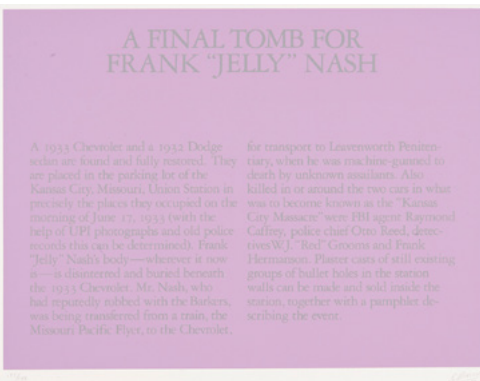
12. Summer from Rainbow Tree Series, printed in 2013



9. Title unknown (ironclad grain elevator), 1934



13. Aqueous Humor, 1979



10. A Final Tomb for Frank 'Jelly' Nash, 1980

11. Title unknown (preliminary drawing for Sun Dogs), ca. 1930



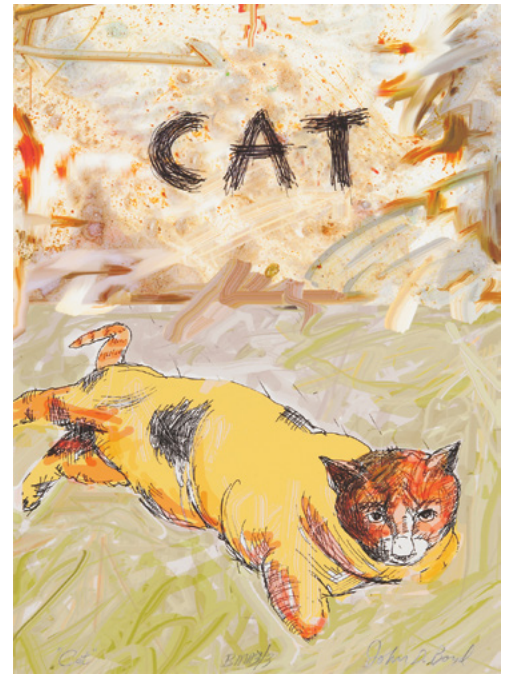
14. Title unknown (woman walking, Santa Fe), 1922

15. *Adobe Brickmaker*, ca. 1931



16. *Traci*, 1990

20. *Cat*, 2012



17. *Saddle*, 1970

21. *Flamingo Sleeping*, 1987



18. *Choice Flower*, 2010



19. Title unknown (large print with stitching), late 20th century



22. Title unknown (landscape with stone building and gate), ca. 1937

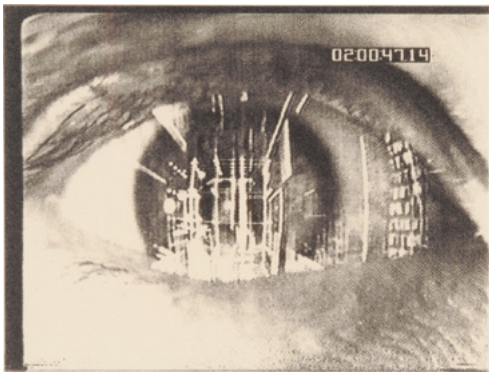


23. Portrait of a Coffee Pot and a Tea Kettle, 2002

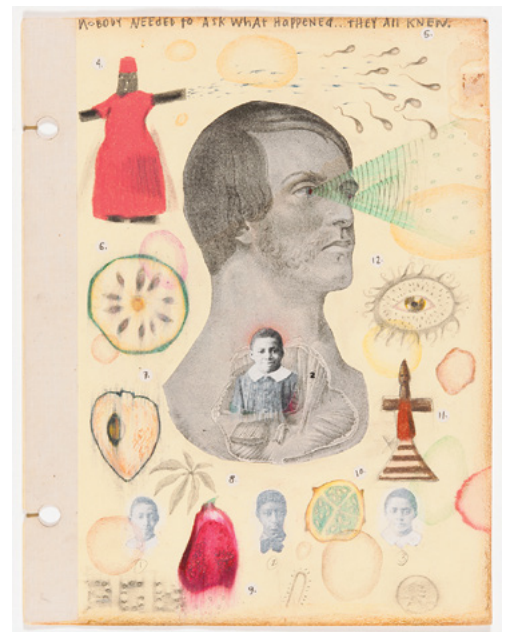


24. Plank, 2012

26. S, 1995



25. Artists and Models, 2006



27. What They All Know (Man Possessed), 2011



28. The Gathering, 2012



29. Kansas Skyscraper, 1934

DONATIONS

ONE OF TWO OBJECTS FROM ANNE BRETZ-ARONOFF:

Barbara Hawkins
(United States, born 1947)
1. *Blue Napkins and Spoons*, 1987
Watercolor on paper
29 3/8 x 29 3/8 in. 2013.21

FIVE OF 94 OBJECTS FROM MEL AND MARY COTTOM:

Celeci Ta Vicenti (United States, born 1911)
8. *Polychrome Shoulder Jar*, early 20th century
Earthenware
6 x 7 1/4 x 7 in. 2012.183

Fannie Nampeyo
(Hopi, United States, 1900-1987)
Polychrome Bowl, mid-20th century
Earthenware with pigment
3 7/8 x 7 x 6 7/8 in. 2012.195

Rosemary Apple Blossom Tafoya (Santa Clara Pueblo, United States, born 1954)
5. *Carved Redware Jar*, 1977
Earthenware
1 3/4 x 2 x 2 in. 2012.206

Artist unknown (United States)
Spiny Oyster Shell Silver Turquoise Bottle,
early 20th century
Silver, turquoise and spiny oyster shell
5 x 1 3/4 x 1 in. 2012.242

Artist unknown (United States)
*Zuni Silver Inlaid Sunface Squash-blossom
Necklace*, mid-20th century
Silver, turquoise and coral
16 in. 2012.245

ONE OBJECT FROM ANNE CROWLEY:

Lester Raymer (United States, 1907-1991)
Title unknown, 1987
Watercolor on paper
9 3/16 x 15 3/4 in. 2012.409

FOUR OF 118 OBJECTS FROM VIRGINIA AND RICHARD DEVORE:

William Judson Dickerson
(United States, 1904-1972)
Indian Girl in Yellow Chair
(*Placida Martinez of Cañada de los Alamos,*
NM), mid-20th century
Oil on canvas
24 x 20 in. 2012.395

William Judson Dickerson
(United States, 1904-1972)
Man on the Street, mid-20th century
Oil on canvas
20 x 24 in. 2012.399

William Judson Dickerson (United States,
1904-1972)

9. Title unknown
(ironclad grain elevator), 1934
Watercolor with graphite on paper
12 1/2 x 19 in. 2012.291

William Judson Dickerson
(United States, 1904-1972)
6. *Southeast of Santa Fe, NM*, 1950
Watercolor with graphite on paper
22 7/8 x 30 1/4 in. 2012.337

TWO OF 11 OBJECTS FROM THE E. MARK ADAMS AND BETH VAN HOESEN ADAMS TRUST:

Beth Van Hoesen
(United States, 1926-2010)
16. *Traci*, 1990
Color etching, aquatint, drypoint, electric
engraving and roulette with hand
coloring on paper
9 1/2 x 8 9/16 in. 2012.428

Beth Van Hoesen
(United States, 1926-2010)
21. *Flamingo Sleeping*, 1987
Color aquatint and drypoint with roulette
on paper
11 7/16 x 13 5/16 in. 2012.429

ONE OF TWO OBJECTS FROM THE FAMILY OF JIM HAGAN:

James Hagan (United States, 1936-2008)
Title unknown, ca. 1965
Plaster, burlap, metal and wood on
wooden board
29 1/2 x 56 1/2 in. 2013.75

ONE OBJECT TRANSFERRED FROM HOLTON HALL:

Artist unknown (20th century)
22. Title unknown (landscape with stone
building and gate), ca. 1937
Works Progress Administration
Federal Art Project
Watercolor with graphite on paper
15 1/8 x 21 1/8 in. 2013.10

ONE OBJECT FROM YOSHIRO AND ESTER IKEDA:

Yoshiro Ikeda (United States, born 1947)
Raindrop Teapot, 2005
32 x 11 x 19 in.
Stoneware, glaze and magnesium
carbonate

TWO OF 34 OBJECTS FROM EARL AND SUSAN IVERSEN:

Earl Iverson (United States, born 1943)
The Woods at Mary's Lake, Lawrence, KS, 2008-11, No. 24, 2011
Gelatin silver print on paper
13 x 17 3/4 in. 2012.257

Earl Iverson (United States, born 1943)
Shadows on the Cabin Home, 2010
Gelatin silver print on paper
17 3/8 x 13 3/8 in. 2012.269

ONE OBJECT FROM THE KANSAS-PARAGUAY PARTNERS:

Alfredo Moraes (Paraguay, born 1954)
Compas de la Vida (Compass of Life), late 20th century
Oil on canvas
15 1/2 x 13 1/2 in. 2012.180

TWO OF 111 OBJECTS FROM MARGO KREN:

George Kren (United States, 1926-2000)
Howard Wooden (director, Wichita Art Museum), outside the museum, Wichita, KS, September 4, 1982, 1982
E-6 color positive
20 x 17 in. 2013.128

George Kren (United States, 1926-2000)
Sandra Sugar (painter) in her studio, West 86th Street, Prairie Village, KS, October 16, 1982, 1982
E-6 color positive
20 x 17 in. 2013.123

ONE OF EIGHT OBJECTS FROM HARRY KRUG:

Harry Krug (United States, born 1930)
Shoal Creek, ca. 1970
Screenprint on paperboard
17 3/4 x 24 in. 2012.286

ONE OF TWO OBJECTS TRANSFERRED FROM THE K-STATE COLLEGE OF ENGINEERING:

Aaron Morgan Brown
(United States, born 1964)
Apotheosis of the Blind Dancer, 2007
Oil on canvas
70 x 52 1/2 in. 2013.24

ONE OF 12 OBJECTS TRANSFERRED FROM THE K-STATE COLLEGE OF VETERINARY MEDICINE:

Otto Schubert (Germany, 1892-1970)
Angst (Fear) from 12 Lithographien: die Leiden der Pferde in Krieg (12 Lithographs:

The Suffering of Horses in War), 1917
Lithograph on paper
15 x 21 13/16 in. 2013.66

ONE OF SIX OBJECTS FROM JANICE LEE:

Janice West Lee
(United States, born 1928)
12. *Summer from Rainbow Tree Series*, printed in 2013
Chromogenic print
8 x 12 in. 2013.14

THREE OF 14 OBJECTS FROM TOM LUTGEN:

Anton Pearson (Sweden, 1892-1967)
Title unknown (standing male figure), mid-20th century
Wood
9 1/2 x 3 3/8 in. 2012.154

Kenneth Miller Adams
(United States, 1897-1966)
15. *Adobe Brickmaker*, ca. 1931
Lithograph on paper
9 1/4 x 9 7/8 in. 2012.160

John Frederick Helm, Jr.
(United States, 1900-1972)
29. *Kansas Skyscraper*, 1934
Woodcut on Japanese paper
9 3/16 x 12 1/8 in. 2012.166

FIVE OF 39 OBJECTS FROM DONALD J. MROZEK AND R. SCOTT DORMAN:

Charles Arnoldi (United States, born 1946)
4. *Untitled*, 1979
Etching on paper
6 x 5 in. 2012.140

Robert Morris (United States, born 1931)
10. *A Final Tomb for Frank 'Jelly' Nash*, 1980
Screenprint on paper
18 7/8 x 24 in. 2012.169

Dallas John (United States, 1945)
13. *Aqueous Humor*, 1979
Screenprint on paper
20 1/16 x 15 1/8 in. 2012.174

Robert Longo (United States, born 1953)
26. *S*, 1995
Lithograph on paper
3 x 4 in. 2013.51

David Salle (United States, born 1952)
24. *Plank*, 2012
Ink-jet on paper
8 x 10 in. 2013.55

ONE OBJECT FROM JOHN O'SHEA:

Alan Shields (United States, 1944-2005)
19. Title unknown (large print with stitching), late 20th century
Screenprint and collage with thread stitching
35 7/8 x 36 1/4 in. 2013.23

ONE OBJECT FROM CANDYCE RUSSELL:

Albert Henry Krehbiel
(United States, 1873-1945)
14. Title unknown
(woman walking, Santa Fe), 1922
Oil on canvas board
12 x 13 in. 2012.279

ONE OBJECT FROM TERESA SCHMIDT:

Teresa T. Schmidt
(United States, born 1947)
25. *Artists and Models*, 2006
Etching on paper
11 7/8 x 9 in. 2013.27

ONE OF EIGHT OBJECTS FROM CHARLES STROH, IN MEMORY OF SARAH KATHERINE WATT:

Charles Stroh (United States, born 1943)
Parable, 1990-1995
Acrylic on paper
11 x 14 3/4 in. 2012.455

TWO OF FOUR OBJECTS FROM JOHN, SUSAN AND JOHNNY WATT, IN MEMORY OF SARAH KATHERINE WATT:

Jackson Lee Nesbitt
(United States, born 1913)
7. *Auction Barn*, 1989
Lithograph on paper
12 5/8 x 17 in. 2012.138

Robert Briscoe (United States, born 1947)
Title unknown (large lidded container), 2011-2012
Glazed stoneware
14 1/8 x 6 in. 2012.431a and b

ONE OF 66 OBJECTS FROM GAIL WINDISCH:

Advertisement for Lucky Strike cigarettes, Life, July 20, 1942, featuring Thomas Hart Benton's *Outside the Curing Barn*, 1942
Photomechanical reproduction on paper
13 1/2 x 10 1/2 in. CM48A.2012

PURCHASES

Norman Akers (United States, born 1958)
28. *The Gathering*, 2012
Lithograph on paper
22 3/4 x 16 1/2 in.
K-State, Beach Museum of Art, 2013.7

Norman Akers (United States, born 1958)
2. *Ships of Change*, 2008
Monotype on paper
9 3/16 x 8 1/4 in.
K-State, Beach Museum of Art, Friends
Kansas Art Fund, 2012.148

Jacqueline Bishop
(United States, born 1955)
18. *Choice Flower*, 2010
Watercolor over collage on paper
18 1/8 x 30 1/8 in.
K-State, Beach Museum of Art, 2013.8

2013 FRIENDS OF THE BEACH MUSEUM OF ART GIFT PRINT

John Boyd (United States, 1939-2012)
20. *Cat*, 2012
Ink-jet on paper
12 5/8 x 9 1/4 in.
K-State, Beach Museum of Art, 2013
Friends of the Beach Museum of Art gift
print, 2013.12

John Steuart Curry
(United States, 1897-1946)
11. Title unknown (preliminary drawing
for *Sun Dogs*), ca. 1930
Charcoal on paper
10 x 13 1/8 in.
K-State, Beach Museum of Art, 2012.430

Patrick Duegaw (United States, born 1966)
23. *Portrait of a Coffee Pot and a Tea
Kettle*, 2002
Acrylic, ink, screws and polyurethane
on wallboard
41 1/2 x 38 1/2 in.
K-State, Beach Museum of Art, 2013
Friends of the Beach Museum of Art
purchase, 2012.282

Stanley William Hayter
(Great Britain, 1901-1988)
17. *Saddle*, 1970
Etching and soft-ground etching
on paper
17 1/4 x 21 5/8 in.
K-State, Beach Museum of Art,
purchase, 2013.5

Richard Notkin (United States, born 1948)
Heart Teapot: Internal Combustion, 2011
Stoneware
6 7/8 x 11 x 5 1/4 in.
K-State, Beach Museum of Art, 2013
Friends of the Beach Museum of Art
purchase, Zolla/Lieberman Gallery,
Chicago, IL., 2013.28

Jaune Quick-To-See Smith
(United States, born 1940)
3. *Theatres of War*, 2006
Color lithograph with monotype
on paper
30 1/2 x 22 in.
K-State, Beach Museum of Art, Friends
of the Beach Museum of Art purchase,
2012.256

Evelyn Renfrew
(United States, 1893-1974)
Costumes of All Lands, Folio I and II, ca. 1938
Two portfolios with 47 hand-colored
lithographs on paper
Approximately 8 x 9 in. each
K-State, Beach Museum of Art, Friends
of the Beach Museum of Art purchase,
2012.2-2012.47

Evelyn Renfrew
(United States, 1893-1974)
American Costumes, ca. 1938
Portfolio with 71 hand-colored
lithographs on paper
Dimensions vary between 7 1/2 x 5 1/2 in.
to 15 1/16 x 11 3/16 in.
K-State, Beach Museum of Art, Friends
of the Beach Museum of Art purchase,
2012.49-2012.116

Renée Stout (United States, born 1958)
27. *What They All Know (Man Possessed)*, 2011
Oil stick, pencil and varnish with collage
on paper
11 x 8 1/2 in.
K-State, Beach Museum of Art, Friends
Kansas Art Fund, 2012.275

Emmi Whitehorse
(United States, born 1957)
Pollination, 2011
Monotype and collage on paper
29 11/16 x 22 5/16 in.
K-State, Beach Museum of Art, Friends
Kansas Art Fund, 2012.144

2013 EXHIBITIONS

"Museum of Wonder"



**"EARTH WORKS:
SELECTIONS FROM THE PERMANENT COLLECTION"**

June 4 – August 4, 2013

**"AN AMERICAN IN VENICE:
JAMES MCNEILL WHISTLER AND HIS LEGACY"**

April 2 – June 23, 2013

**"GOOD BOY, BAD BOY:
THE PRINTS OF JOHN BOYD"**

2013 Friends of the Beach Museum of Art Gift Print Artist
March 8 – May 26, 2013

"MUSEUM OF WONDER"

February 12 – October 13, 2013

**"INADVERTENT ARSON:
PAINTINGS AND DRAWINGS BY PATRICK DUEGAW"**

October 5, 2012 – January 13, 2013

"KONZA: SCULPTURE BY JOHN DOUGLAS POWERS"

July 9, 2012 – September 9, 2013

**"GOODNIGHT MOON:
SELECTIONS FROM THE PERMANENT COLLECTION"**

June 5 – December 23, 2012

**"QUIET SYMMETRY:
THE CERAMIC ART OF YOSHIRO IKEDA"**

April 17 – September 1, 2012

"Quiet Symmetry"



EDUCATION AND PUBLIC PROGRAMS

The Beach Museum of Art has expanded its education and public program offerings and its staff. This year we added a public programs coordinator and three part-time education assistants, allowing the museum to reach and serve more people and increase its collaborative programs.

Of special note is The Meadow, a sustainable native plant project, which is designed to involve and serve all of our audiences.

Creating a mixed-media Earth Works collage.



4-H Discovery Days in Museum of Wonder.

UNIVERSITY AUDIENCES

Classes and tours for Freshman Seminar, Art for Elementary Education, Early Childhood Education, Secondary Art Education, Kansas History, Women's Studies, Creativity with the English Department, Art Department and English as a Second Language.

Meet the Music series featuring performances by K-State music students.

Performance and master class for K-State music students by experimental percussionist and sound sculptor Tatsuya Nakatani.

Special dance workshop with Joe Goode Performance Group and a writing collaboration with creative writing students in the "Museum of Wonder."

K-State Dance Ensemble for the Pop-Up Dance Workshop inspired by "Konza."

Visual Thinking Strategies workshop for the K-State Pre-Med Club and a lecture on art integration at the K-State's Brighter Minds, Brighter Future Symposium.

Brown Bag Luncheon in support of K-State's 150th anniversary featuring presentations by Beach staff members about "Museum of Wonder" and the "Library of Wonder."

COMMUNITY AUDIENCES

Hosted 52 programs and events, including: special talks by Eames Demetrios, a Los Angeles-based artist and geographer at large; Sally Pemberton, author of "Portrait of Murdock Pemberton"; and Fred Wilson, McArthur fellow, artist and "museum therapist," presented in collaboration with K-State Libraries and K-State Department of Art. Hosted a public opening for "Inadvertent Arson: Paintings and Drawings by Patrick Duegaw," featuring live music composed by Dan Racer.

Participated in the Healing Arts collaboration with Fort Riley's Parent to Parent program, K-State Institute for the Health and Welfare of Military Families, and the Warrior Transition Battalion. The museum provided eight workshops for military personnel and families. In addition, the museum is participating in the National Endowment for the Arts Blue Star Museum Program.

Provided special programs for Martin Luther King Jr. Observance Week, including a Day-On Open House and showing the film "The Rosa Parks Story."

Special therapeutic art programs for the Manhattan Parkinson's Support Group.

Art Beyond Sight Open House event in October 2012, and continued pilot site collaboration with the National Art Beyond Sight program to test training and evaluation materials.

Hosted the first Kansas Alliance for the Art in Education Conference.

Events in conjunction with K-State Family Day and All-University Open House, and creative family holiday workshops.

SCHOOL-AGE AUDIENCES

Intersection of Math and Art, Picturing Kansas and Building the Brain Through Curiosity tours for 4,255 students and outreach programs for 3,144 children.

The addition of the On Target Observation Station, a multi-visit art, science and language arts outreach program for middle school students.

Teacher Resource Center loans to 62 schools and organizations serving 3,924 people.

Young Curator and Young Artists programs and exhibition.

Annual collaboration with the Manhattan Public Libraries summer reading program — "Earth Works" exhibition and summer programming for ARTSmart classes and Maker's Space printmaking workshop for teens.

Celebrated children's artistic development through the Manhattan-Ogden Public School Foundation's Early Expressions Exhibition and the Beach Museum of Art's second annual Young Curators and Young Artists program.

ARTSmart early childhood and family program served 1,600.

Visual Thinking Strategies workshop for USD 383 art teachers and classroom teachers at Lee Elementary School.

HONOR ROLL OF GIVING

JULY 1, 2012 – JUNE 30, 2013

DOCENTS

These specially trained volunteers offer their time and energy to act as welcoming hosts and educators for the museum. Thank you for your contributions.

Diane Barker
Kathy Borck
Sandy Bussing
Jennifer Cheek
Dru Clarke
Mike Clarke
Sheila Clement
Helen Cooper
Janet Cooper
Loriel Cross
Barbara Gatewood
Bill Groce
Karen Hummel
John Pence
Nancy Prawl
Kathleen Rottinghaus
Candyce Russell
Carla Schroller
Anneke Van Der Hoeven
Irene Ward

EDUCATION ASSISTANTS

Dianna Bartel
Julie Kiracofe
Kim Richards

Mike Alcock
Martyn Apley
Trent and Laura Armbrust
Michael Awua-Duah
Richard and Shirley Baker
Mimi Balderson
Dana and Tom Ball
John and Seana Balman
Donna Bark
Diane Barker
Ross* and Marianna Beach
Thomas Bell
Janet Benson
Blair Benz
Steve and Deloris Berland
Steve and Sandra Bernasek
Rand and Patti Berney
Ann Berry
Dan and Beth Bird
Judd and Cyndy Blunk
Rebecca Blunk
Vernon Bode
Linda and James Bongers
Kathy Borck
Lee Borck and Jackie Hartman Borck
Will Boyer and Darla Allen
Dale and Susanne Bradley
Dorothy Bramlage*
Margaret Buie
Richard Burke
Charles and Sandra Bussing
Christeene and Lyle Butler
John and Sydney Carlin
Judith and Richard Cattell
Mickey Chance-Reay
JoAnne Chapman
Lindsay and Justin Chapman
Tom and Sue Chavey
Anthony and Carole Chelz
Charley and Nancy Cole
Kenneth and Margaret Conrow
Helen and Peter Cooper
Larry and Marcia Cooper
Steve and Janet Cooper
Saadia Coppedge
Mary Cottom
Anthony Crawford
Marie Crawford
Anne Crowley
Sue David
Robert and Sherry Davis
Tim and Anne de Noble
Lincoln Deihl
John and Bonnie Devore
Virgina and Richard DeVore
Ron Downey and Irene Ward
Linda Duke
Herbert and Patricia Duncan
Bill Durkee
R. A. and Terry Edwards
Anne Emerson
Phyllis and Jim Epps
Howard and Ann Erickson
Dennis and Deborah Fair
Mont and Marsha Fair
Joe and Nancy Farrar
Clyde and Marilena Ferguson
Ann and William Feyerharm
Sophia Ford

Curt and Sherry Frasier
Ruth Friedmann
DeeAnna Fugate
Ned and Barbara Gatewood
Joyce Glasscock
Lori Goetsch and Martin Courtois
Joann Goldstein
Marvin and Rebecca Gould
Austin Graham
John and Mary Lee Graham
Steven and Cheri Graham
Sue Greig
Mary Jo Griffith
R. J. Gump
David and Karen Gustafson
Patricia Wann Hagan
Wayne and Brenda Hagerman
Mary Hall
Sarah and David Hancock
R. Clay Harvey and Patricia McGivern
Mark and Michelle Haub
Grant Haun
Dick and Barbara Hayter
John Heritage and Susan Adamchak
Joleen Hill
Tom and Vera Hintz
Don and Gretta Hoffman
Kay Hoffman
Robert and Gloria Holcombe
Jeffrey and Peg Hornsby
Cleve Humbert
Steve and Karen Hummel
Carl and Mary Ice
Yoshiro and Ester Ikeda
Earl and Susan Iverson
Rich and Micky Jensen
Travis Jensen
Jim and Angele Johnson
Clyde and Midge Jones
David and Beverly Jones
George and Stormy Kennedy
Beth Kesinger
Hyeonjung Kim
Jeong-Hee Kim
Becky Klingler
Mark and Ann Knackendoffel
Ryan and Erika Knopp
Lowell and Stacy Kohlmeier
Margo Kren
Joel and Sharon Kriss
Harry Krug
Bob and Jan Kruh
Oscar and Mary* Larmer
Gene Laughlin
Ann Lee
Janice Lee
Steve Lee and Nancy Raleigh
Jon and Lila Levin
Tim Lindemuth
Edward Lincoln
Tom and Elizabeth Lindquist
Kendall and Elizabeth Lubay
Tom Lutgen
Jo and Ken Lyle
Chuck and Kathy Lyman
Courtney Marshall
Phillip Marzluf and Anne Longmuir
April Mason and Frank Heiliger
Dennise Mauricio
Bob and Diana McCaustland
Fred and Virginia Merrill
Martha and Mike Miller
Kimmi Misenhelter
Gerald and Kathryn Mitchell

Back cover image:
Norman Akers
(United States,
born 1958)
New Company, 2011
Monotype on
paper
9 13/16 x 13 3/4 in.
K-State, Beach
Museum of Art,
2012.149

Jeffery and Cindi Morris
Frank and Joan Mosier
Donald J. Mrozek and R. Scott Dorman
Deborah Murray and Jerome Dees
Stan and Jill Myers
Philip Nel and Karin Westman
Dallas and Evelyn Nelson
David and Mary Jo Nelson
Jay and Barbara Nelson
Kathleen Newell
Charles and Patricia Niernberger
Jorge and Patricia Nobo
Sara O'Donnell
Rosella Ogg
Al and Inger Olsen
Richard Olson*
John O'Shea
Suzanne and Henry Otto
Catherine Parr
Jody Parsons
Sally Patton Anderson
Pat Payne
Stephen Pendleton
Karl and Cherry Perkins
Jack Peterson
Jerry Pettie and Katie Philp
Mary Pollack (Lawrence)
Jean and Joe Ponte
Don and Lynne Rathbone
Betsy Rayfield
Chuck and Sharon Reagan
Jim Reagan
Roger and Virginia Reitz
Allen and Amy Renz
Bill and Linda Richter
Kay and David Ring
Faith Roach
Carolyn Roberts
Thomas and Dixie Roberts
Brett and Tracy Robinson
Marrin Robinson
Jeroen Roelofs and Stella Lee
Candyce Russell
Jack and Jenney Ryan
Stephen and Deborah Saroff
Teresa Schmidt
Gary and Carla Schroller
Chuck and Martha Scott
Edward and Karen Seaton
David and Carolyn Seaton
Martha and Richard Seaton
Randy Sedlacek and Mary Ventura
Penny and Rich Senften
Bob and Elaine Shannon
Lewis Shelton and Marcia McFarland
Mike Shilling and Diane Gaede
Steve and Whitney Short
Bob and Marilyn Sjogren
Chuck and Terry Slagle
Kent and Sharon Smith
Bill and Sharon Snyder
Jacqueline Spears and Dean Zollman
Kayla Steffensmeier
Judy Stehley
Bill Stolzer
John and Joan Stretcher
Charles Stroh
Lynn Sullivan
Charles and Marsha Tannehill
Tina Terhune
Edward and Susan Thompson
Rosalie Thompson
Dick and Wann Towers
Danny Trayer and Janice Lee

Beth Unger
Jouke and Mary van Swaay
Jack and Donna Vanier
Eugene Vasseraman
Pat Vogt
Dennis and Sally von Waaden
Ken and Nina Warren
John and Susan Watt
Stuart Watts
Warren and Carol Weibert
Larry and Kay Weigel
Jerry Weis and Linda Browning Weis
Ray and Pat Weisenburger
Jane Westfall
Jim and Marilee Whelan
Gail Windisch
Scott and Frances Willbrant
Clayton and Anita Wolfe
Billie Woodward
Bob and Liz Workman
Keith and Sue Ann Wright
Meg and Kris Yaege
Betsy and John Young
Joe and Barbara Zanatta
Judith Zivanovic

ORGANIZATIONS

Art Craft Printers & Design
Assessment Technologies Institute LLC.
Bernarda Bryson Shahn Family LLC.
Central Mechanical Construction Co. Inc.
Cereal Food Processors Inc.
Chapter IL P. E. O. Sisterhood
Commerce Bank
ConocoPhillips
E. Mark Adams and Beth Van Hoesen Adams Trust
Emprise Bank
Kansas Corral of the Westerners Inc.
Kansas Paraguay Partners
K-State Alumni Association
Little Apple Veterinary Clinic P.A.
Manhattan Retirement Foundation Inc.
Manhattan-Ogden Public Schools Foundation
Max Byron Miller Trust
Mulvane Women's Board
Seaton Publishing Co. Inc.
Stardusters Study Group
Strecker-Nelson Gallery
Target
Terra Rosa Fine Art Inc.
The Citizens State Bank
The Trust Company
University Book Store

* Deceased

LIFETIME HONOR ROLL OF GIVING AS OF JUNE 30, 2013: \$25,000+

Naim and Beverly Azer
Ross* and Marianna Beach
Dan and Beth Bird
Dorothy Bramlage*
Virginia Bussey*
Wayne and Margaret Castle
Chuck* and Georgia Chandler
Richard P Coleman*
Pat and John Conderman
Kathleen Curry*
Lincoln and Dorothy* Deihl
Richard DeVore

Joe and Sherry Downey
Tom and Lou Ann Dunn
Nelson and Marilyn Galle
Janice Gartrell*
Jack* and Joann Goldstein
John and Mary Lee Graham
R. Clay Harvey and Patricia McGivern
Cleve Humbert
Adrienne Hyle and Grover Phillips
Dorothy Hyle*
Mary Jarvis*
Gil Johnson*
Jim and Angele Johnson
Sandy and Christine Kemper
Margo Kren
Don Lambert
Sam and Martha Logan
Jessie Lyman
Charles Marshall Jr.
Fred and Virginia Merrill
Carl* and Ruth* Miller
Max Byron Miller*
Donald J. Mrozek and R. Scott Dorman
Rhonda and Dennis Mullin
Caroline Peine*
Perry and Virginia Peine
Marion Pelton*
Mary Pollack (Lawrence)
Price R.* and Flora A.* Reid
Frances Ross*
Lori Ryan and Tony Cairns
Bill Salero*
Daniel Schuster
Edward and Karen Seaton
Richard Seaton*
Bill and Eleanor* Stolzer
James and Sharon Vance
Jack and Donna Vanier
Ted* and Helene* Varney
Pat Vogt
Robert* and Barbara Wilson
Jan and Tom Wilson

ORGANIZATIONS

American Direct Procurement
Cereal Food Processors Inc.
Emprise Bank
Enid and Crosby Kemper Foundation
Kansas Farm Bureau Mutual Insurance Co. Inc.
Martin K. Eby Construction Co. Inc.
MetLife Foundation
R.C. Kemper Jr. Charitable Trust & Foundation
Steel & Pipe Supply Co. Inc.
UMB Financial Corp.
William T. Kemper Foundation

DEFERRED GIFT DONORS

Jim and Carol Brown
Terry and Tara Cupps
Ron Downey and Irene Ward
Dennis and Deborah Fair
Mont and Marsha Fair
John and Mary Lee Graham
R. Clay Harvey and Patricia McGivern
Hank and Sally Hoesli
Margo Kren
Charles Marshall Jr. and Richard Tooke
Nolan and Jean McKenzie
Keith Mull
Perry and Virginia Peine
Jack and Donna Vanier

* Deceased

